



Sylvan Glen

ESTATE

Group Celebrations... Reunions... Reconnects...
Corporate Meetings and Events...

Work, rest, play, reconnect and celebrate
in the magical Southern Highlands

CONTENTS

The Sylvan Glen Story	3
The Estate	4
Groups & Conferences	7
The Activities	11
The Accommodation	13
The Food & Drink	16
The Investment	19
The Testimonials	21



THE STORY

The Hescott family bought Sylvan Glen in 2001. The historic property had been a family orchard since the 1870's and hosted local weddings, dances, and accommodation from the turn of the century – and we could see why. Mature European trees are some of the finest in the country, sweeping views that beg for adventure and wildlife to habit the space – we were in love!

Three generations of the family still run and have a passion for weddings and events.

So, what makes us this multiple award-winning venue and why would you be impressed?

With over 20 years of experience under our belts we are very proud to be hosting seamless, stress-free wonderful events!

Donna & Matt Hescott

P: 0429 000 897 | E: weddings@sylvanglen.com.au



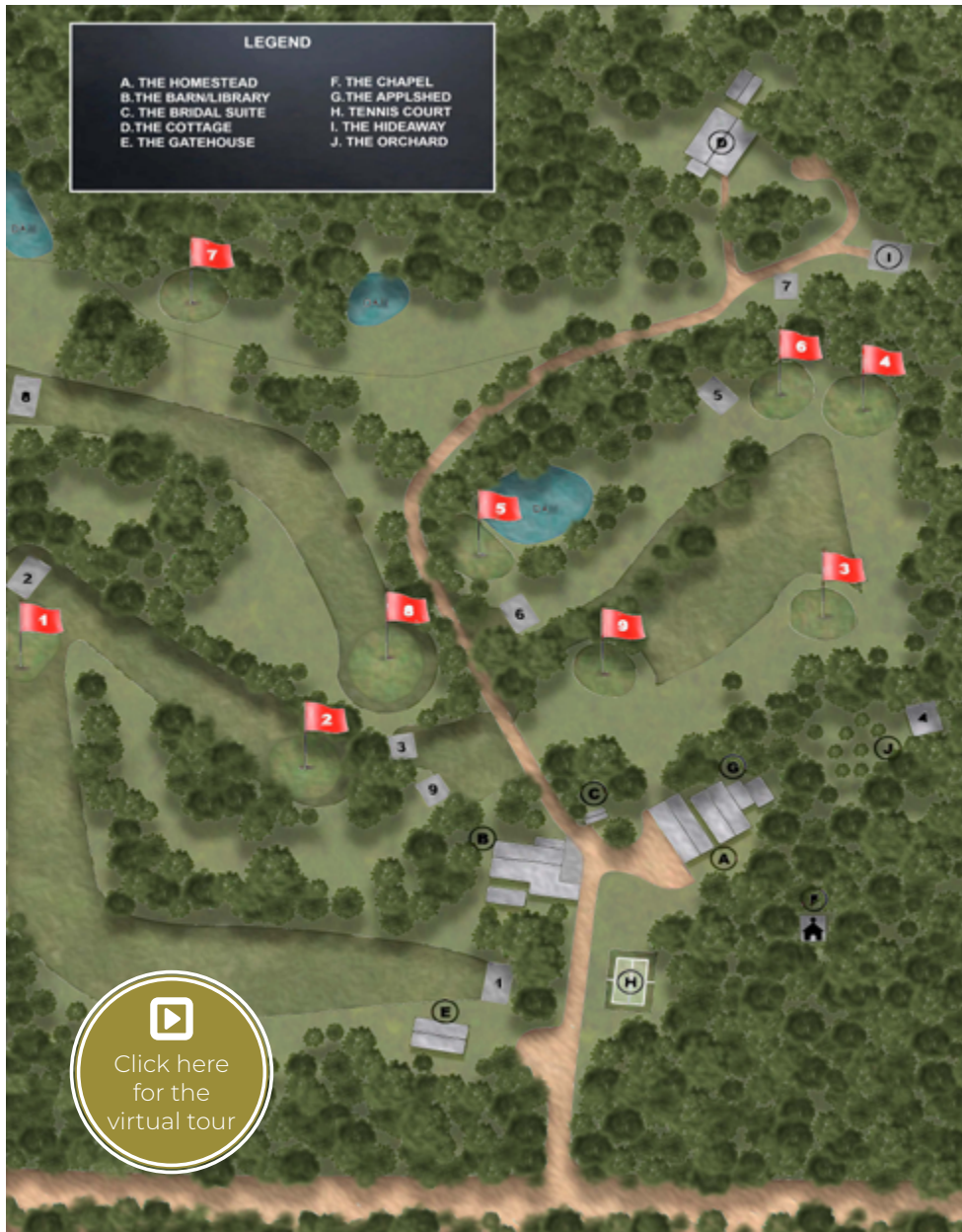
L O V E



THE ESTATE



THE ESTATE: OVERVIEW



Privacy, character and an impressive range of on site activities so that your group will be relaxed and energised. If generic conference rooms and impersonal hotels don't match your uniqueness, consider Sylvan Glen for professionalism with personality.

- ✓ **On site event** – Outdoor or in? Choose any space on the property or go with our most popular options of the 150-year-old orchard setting or indoor stone bush chapel.
- ✓ **Large event spaces** styled in a rustic luxe theme, including seating for up to 140 guests, dedicated bar, lounge area, garden bar and of course a dance floor big enough for everyone.
- ✓ **Accommodation** – Original historic homestead with salon, plus optional Cottage, and Hideaway retreat for a total of 62 guests within the property.
- ✓ **Our in-house catering** and beverage team create the perfect reception dining experience.
- ✓ Your own **event planner** from inception all the way through to the end of the weekend festivities.
- ✓ **Simple to understand pricing**, payment plans and help with external suppliers.



GROUPS & CONFERENCES



GROUPS & CONFERENCES: EVERYTHING YOU NEED PLUS A GOOD DOSE OF PERSONALITY



If you value natural light, fresh air and up-to-date meeting and conferencing facilities, you'll love Sylvan Glen.

Choose from several versatile meeting rooms and break-out spaces for your exclusive use.

Conference Room 🧑 60

Separate from the guesthouse and overlooking the beautiful acreage, the conference room is bright, airy and fresh. This room can be set-up in various configurations for up to 60 people.

The conference room is air-conditioned and supplied with a projector and screen, pens, notepads, water, mints, flip-board and butcher's paper.

\$500 per day (9am to 5pm)

Guesthouse Meeting Rooms 🧑 24

The character-filled and versatile meeting rooms located within the guesthouse are another choice for informal groups of up to 24 people.

The Pantry 🧑 30

If the smell of brewing coffee and an open fireplace is your style, the Sylvan Glen Club House is a wonderful choice for a break-out room with rustic charm.

This room spills directly onto an outdoor area, where you can enjoy a BBQ lunch or afternoon coffee in the sunshine.

\$300 per day (9am to 5pm)

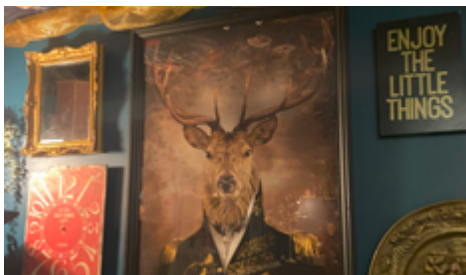
Let the spectacular natural backdrop of the Southern Highlands and the unique, rustic charm of Sylvan Glen be your host;

- Group celebrations
- Family events
- Corporate meetings
- Business incentives
- Team bonding
- Christmas parties



GROUPS & CONFERENCES: YOUR SPACES FOR YOUR IMPORTANT FACES!

(Available only when booking Party time package + Canape package)



The Bar

Entering from the garden or the dining area, the Bar was once the greenkeepers mower shed! Now decked out in lounges, our licensed bar caters for all drinks throughout the evening. Our photo props and instant cameras are on hand for some silly memories.



The Whisky Lounge

A chilled-out space to relax and chat, away from the dancing and music.

Dining area

Our Rustic Luxe styling is inviting and relaxing – long wooden tables paired with bronze tiffany chairs. There's space to move with warm lighting, library book backdrops and natural light – a joy for photos and laughs alike.

Dance floor

Whether you choose a band, DJ, solo singer or use the in-house PA system and lighting, the dance floor is built ready to party.

No tables to move out, it's a dedicated space.



GROUPS & CONFERENCES: YOUR SPACES FOR YOUR IMPORTANT FACES!

Room 1 🧑 2

King

Room 2 🧑 2

King

Room 3 🧑 2

King

Room 4 🧑 2

Double

Room 5 🧑 3

Double & Single

Room 6 🧑 2

Queen

Room 7 🧑 2

Double

Room 8 🧑 3

Queen & Single

Room 9 🧑 2

King

Room 10 🧑 3

Queen & Single

Room 11 🧑 4

King & 2 x Single

London 🧑 5

Queen & 3 x Singles

Paris 🧑 4

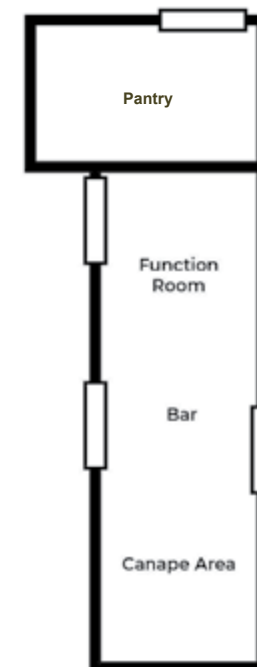
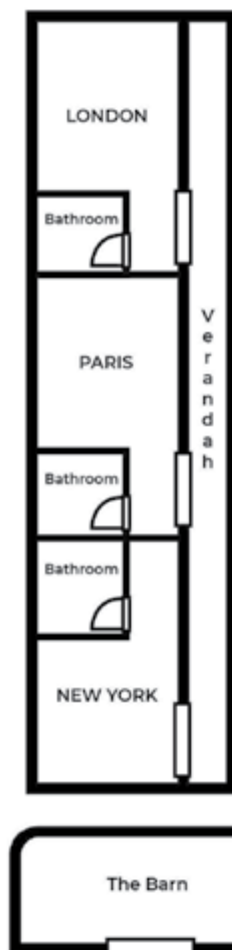
Queen & 2 x Singles

New York 🧑 5

Queen & 3 x Singles

Bridal 🧑 2

Queen Bed



THE ACTIVITIES



THE ACTIVITIES: OUR UNIQUE, BESPOKE SERVICES & FACILITIES

Sylvan Glen is more than just an event venue. As part of our package, we provide the expertise, facilities and activities to make your event weekend one to remember for everyone involved from the moment you arrive. In addition to the on-site offerings below, local activities such as wine tasting and antique store visits can be arranged. Speak to our friendly, expert team for more information.



Event Planner

Allow us to tap into our experience and network to take your stresses away and provide a turn-key event.



Styling & Decoration

We design and style each space to suit your individual rustic dreams and requirements.



Transport

Our very cool 61-seater bus can be arranged to pick up and drop off guests \$POA.



Photobooth & Guestbook

Fun wedding favours for your guests and a guestbook of memories for you.



9 hole Golf Course

A 9-hole golf course for your private use, footgolf also available.



Garden & Indoor Games

Croquet... bowls... volleyball... basketball... tennis court... giant chess... pool table and more!



Swimming & boating

Enjoy a range of water activities in our pristine lake.



Nature trails

Run, walk or ride around Sylvan Glen's 60 acres and see if you can spot our resident natives.

THE ACCOMMODATION



THE ACCOMMODATION: BRINGING YOUR GROUP TOGETHER

The Homestead 🧑 41

Extended from the property's original 1870's dwelling, the Homestead contains:

- 14 en suite rooms, ranging from doubles to five-person family rooms totalling 41 guests.
- Communal spaces including lounge areas with log fires, pool room, TV and games room, ironing area.
- Kitchen and tea/coffee station with loads of fridge space for first night BYO.
- Veranda and decks with garden and golf course views.
- The Barn and Silo – unique and fun, these converted buildings will delight guests as the venue for your first night dining space. With two log fires and views of the golf course, The Barn and Silo kitchen add a new dimension to your accommodation experience.



THE ACCOMMODATION: BRINGING YOUR GROUP TOGETHER

The Cottage 🧑 18

If available, it's up to you if you would like to book The Cottage/Hideaway for your event. They are separate and private from the main reception and Homestead so if you don't need the extra accommodation, other guests staying instead won't affect your private wedding.

Located in the Northeast of the Estate, The Cottage is a 400m drive or walk through the golf course. The 320sq/m cottage contains....

- Four queen and one twin en suite bedrooms.
- One Bunkhouse to sleep 8.
- Large living area with log fire.
- Games area, Wi-Fi, Firepit, BBQ and cubby house.
- Mature gardens, golf course views and car park.
- Fully equipped kitchen.
- Sleeps 18 guests.



The Hideaway 🧑 2

This one-bedroom studio cabin was designed and built to accommodate our bridal couples who want to return to relive their wedding weekend memories! It contains...

- King bed with gorgeous linen sheets.
- Large en suite with bath and twin shower and vanities.
- Full kitchen and in and out dining areas.
- Deck overlooking the seventh fairway.
- Wood fired hot tub.
- Parking, private garden and firepit space.
- High end finishes throughout.



THE FOOD & DRINK



THE FOOD & DRINK: CATERING OPTIONS

Breakfast in the pantry \$39 per person (\$15 Children)

8.30am to 10.30am each day

- Cereals, Toast, Fruit salad, Yogurts and DIY pancakes. Followed by hot English cooked breakfast.
- Tea, Coffee, Apple, and orange Juice.

Light Lunch Sandwich platters \$25 per person (\$15 Children)

BBQ in the barn \$39 per person (\$15 Children)

6pm – 10.30pm

- Porterhouse steaks, sausages, hot jacket potatoes, green salad sliced beetroot with feta, coleslaw, bread rolls.

Garden Bar and Canape time \$39 per person (\$15 Children)

6pm – 7pm, minimum 30 guests

Intimate Dining event \$89 per person (\$35 Children)

3 course dinner held in the pantry, 6pm – 9pm, maximum 30 Guests.



THE FOOD & DRINK: MENUS

Entrée menu

Entrée menu Choose up to TWO options (+ correct dietary options served accordingly).

- Warm pear and blue cheese tart (V).
- Rare scotch fillet beef + pickled baby beetroot w/horseradish cream and rocket.
- Traditional prawn cocktail.
- House made seasonal soup with sour cream and croutons (V, VG).
- Spinach and feta Ravioli +Napoli sauce w/ Parmesan (GF, V).
- Pork belly + spinach w/ Honey soy dressing.
- Buffalo mozzarella + Roma tomato stack w/basil pesto dressing (V).
- Pumpkin cous cous stuffed Bell pepper w/ fresh mint (V, VG).

Mains

Choose up to TWO options - served to guest tables plated with Dauphinoise potato stack.

- Rack of Lamb w/ Rosemary Jus GF,NF.
- Scotch Fillet Beef w/ Brandy garlic sauce GF,NF.
- Prosciutto wrapped Chicken breast w/ Creamy Turmeric sauce GF,NF.
- Pork Belly w/ Apple cider gravy GF,NF.
- Baked Salmon w/ dill + cherry tomatoes GF,NF.
- Roasted Butternut pumpkin steaks w/ spiced rub V,VG,GF.
- Fresh Gnocchi in roasted garlic + tomato sauce V,VG,NF.

Choose 2 accompanying dishes – served to table for relaxed style self serve or plated:

- Whole tarragon glazed carrots w/ Greek yoghurt + poppy seeds GF,V,NF.
- Green beans and broccolini w/ Green goddess dressing and almonds GF,V,NF.
- Spice roasted cauliflower w/ Tahini + almonds GF,V,VG.
- Pumpkin cous-cous w/ fresh mint V,VG.
- Roasted red onion, Brussel sprouts and toasted pine nuts V,VG,GF.

Banquet Station (min 60 guests)

Choose two carved roasted meats – Loin of Pork, Leg of Lamb, Scotch fillet Beef, Baked Salmon, or Chicken.

- Green garden salad, hot roast potatoes and bread rolls included.
- Choose 6 salads from the Salad Bar:
 - Greek salad.
 - Poached chicken Caesar salad.
 - Japanese slaw with sesame mayo.
 - Spice roasted cauliflower with tahini and almonds.
 - Lentil salad with coriander.
 - Edamame, freekeh and kale.
 - Chicken, basil penne.
 - Pesto pasta with sundried tomatoes.
 - Creamy noodle.
 - Chicken and bacon carbonara.
 - Pumpkin cous cous with fresh mint.
 - Turmeric cous cous with cauliflower and cranberry.
 - Black rice with beetroot, walnut and feta.

Dessert bar

Guests choose from a selection of delectable individual treats, served with fresh cream, strawberries and blueberries including:

- Belgian chocolate mousse.
- Brandy snaps.
- Custard tarts.
- Trifles.
- Pavlovas.
- Cheese cakes.

Children's meals

By request, aged 3 to 16 years

- Chicken Tenders and curly fries
- Spaghetti and meatballs
- Lasagne and fries

SYLVAN GLEN ESTATE CATERING

AREAS (SELF-CATERING)

The Homestead Inhouse Dining Room.

Situated right next to the inhouse very well-equipped kitchen, great for your self-catered breakfast lunch or dinner!

- The Homestead seats 32 people on 2 long tables of 16 and outdoor seating is available at the front and back of the property.
- All inhouse self-catering must be left clean and tidy after use and all waste and recycling placed in the correct bins provided.
- Staff will not be attending onsite self-catered groups.

AREAS - (SYLVAN GLEN CATERED OPTIONS)

The Silo and The Barn

You have the option of hiring this space and look after yourselves or choose to have Sylvan Glen take care of all the hard stuff for you.

A great space for mingling and dining with all the shopping and dishwashing taken care of for you.

We provide a very delicious BBQ which is all pre prepared and placed in the house kitchen.

- Simply fire up the BBQ at your leisure.
- All Alcohol is BYO and large drinks fridge, and glasses are provided.
- Add your own nibbles with everything you need in the house kitchen.
- And the best thing is the staff wash all this up for you the next day. Bingo!!

The Pantry

The pantry has two setups and is just a short walk across the carpark.

The Pantry Breakfast, 8.30am - 10.30am

The pantry is fully staffed, and the girls take very good care of you!!

The Pantry Dinner 6-9pm

At night the pantry is converted into a popup restaurant all setup with one long dining table to sit up to 32 guests.

With Gold cutlery, Gold trimmed crockery and crystal glassware the pantry is the perfect spot for an intimate celebration dinner with family and friends

- You will have the room exclusive for 3 hours and your prebooked menu will be served by our friendly staff.
- So have your afternoon pre dinner drinks in the homestead then wander across for dinner.
- Then you are free to carry on your celebrations over in the homestead staying up as late as you wish!
- *Christmas in July brings out all things Christmas and is real experience!*

The Function suite

For those wishing to host a more dinner and dancing style party, you can hire the large function room complete with bar, dancefloor a whiskey lounge and even a fun photobooth.

You also have the option to add pre dinner canapes in which the outdoor garden bar will also be setup for you complete with giant chess and fun garden games.

Because Holidays are too short to be washing dishes all weekend!!!

CATERING RATES

Event Space	Seating capacity	Hire for DIY	Hire and Sylvan Glen catering	Catering options in this space	Staffing
Homestead Dining Room	32 (ideal for breakfasts)	No charge	X	DIY only	X
Chapel on the Lawn	Can be setup for Seating for 40 Ideal for lunch (daytime)	No charge	X	DIY only	X
The Barn and Funky Outdoor Silo Kitchen. <i>Note: No loud music permitted.</i>	60 max	Weekend hire \$990	\$400	BBQ @ \$39 pp	Setup and clear up the next day included with SG catering.
The Pantry	32 for dinner Unlimited for breakfast	X	\$550 dinner only No hire charge for breakfast or lunch.	3 course dinner @ \$89 pp. Breakfast @ \$39 pp	Fully staffed. Setup and pack down included.
The Function Suite, including: Chamberlains Bar, The Whiskey Lounge, Photobooth and Dancefloor.	144 max	X	\$1200 per event	3 course dinner @ \$89 pp	Fully staffed. Setup and pack down included.
TERMS	<ul style="list-style-type: none"> • Strictly no wedding events. • No loud music at any time. • All prices are for a 2-night stay. Check in 2pm. checkout 2pm (subject to availability). • 3rd night: 20% discount • Midweek (Tuesday to Thursday) stays can take advantage of a 20% discount. • Public holidays, Christmas, New year and Easter are a minimum 3 nights + 10% surcharge for Christmas and New year. 				

THE INVESTMENT



THE SEASONS: WHEN TO BOOK

Sylvan Glen is truly a year-round venue with each season offering something special for everyone. From crisp winter nights encouraging you and your guests to get cosy next to a roaring fire to the colourful backdrops of Spring and Autumn through to those barmy Summer days where you can celebrate under blue skies and enjoy an ice cold bubbles under a shady tree.



Spring

Pretty Blossoms and Blooms.

September - October - November

Average temperatures

Sept 6-13°C, Oct 6-19°C, Nov 10-19°C



Summer

Warm longer nights.

December - January - February

Average temperatures

Dec 11-24°C Jan 13-26°C Feb 14-39°C



Autumn

Stunning backdrops of reds, golds and orange trees.

March - April - May

Average temperatures

Mar 25°C, Apr 20°C, May 16°C



Winter

Cosy fires and blankets.

June - July - August

Ave Temps

Jun 3-12°C, July 2-11°C, Aug 6-12°C



Directions

From Sydney (shortest route) 90 min.

From Sydney (scenic route via Bowral) 2hrs.

From Canberra 90min.

Google Maps link for Sylvan Glen - [Click here](#)

THE TESTIMONIALS: HAPPY COUPLES



Donna was amazing through the whole two-year period from booking with them, right up to the weekend of our wedding, and even beyond in our communication since the wedding. Considering that a large chunk of our wait was during covid, she remained incredibly calm, patient and reassuring. We couldn't have had a better experience dealing with her and we're incredibly grateful for everything she did for us!



The ceremony venue was one of the biggest draw cards for us when booking Sylvan Glen. The improvements that have been made to the facilities since booking our wedding were the cherry on the cake. Just when we thought it couldn't get any better, it did. We were also incredibly impressed with the addition of a magnificent wet weather option that we would have been more than happy to use if we had needed it!



Our wedding was fantastic. Facing terrible weather our coordinator and venue staff made the day seem effortless and perfect. We wouldn't change a thing that happened and would recommend this venue to anyone wanting a country fun laid back wedding.



Donna was amazing. So lovely in every single interaction. Through covid, my cancer, two postponed wedding dates, she kept up a smile and her very helpful attitude. The whole family are wonderful, and it makes me a bit sad I won't see them again for some time!



Absolutely exceptional. We didn't need to spend any money decorating the reception - not even flowers - because Donna has done such a great job styling it. Just gorgeous.
A very cosy, fancy but still comfortable vibe that we and our guests adored. The food was incredible too!
Our guests are still raving about it as one of the best wedding parties they've ever been to.



Donna was amazing and so very helpful! She always checked in to make sure we were okay or if we needed anything.



THE RATES

Rates	2023	2024	2025
SPRING/SUMMER/AUTUMN/WINTER			
The Homestead (Exclusive use) 14 Rooms Weekend Rate	\$4900 per night	\$4970 per night	\$5040 per night
The Greenkeepers cottage Queen 4 Poster Bed, Sleeps 2	\$550	\$550	\$550
The hideaway Luxury apartment situated on the golf course, Sleeps 2	\$1400	\$1500	\$1600
The Cottage Separate house 300m across the golf course, sleeps 18	\$3900	\$4000	\$4100

TERMS

- Strictly no DIY wedding events.
- Weeknds are a min 2-night stay. Check in 2pm. checkout 2pm (subject to availability).
- Tuesday to Thursday) stays can take advantage of a 20% discount.
- Public holidays, Christmas, New year and Easter are a minimum 3 nights + 10% surcharge for Christmas and New year.
- Additional 3rd night onto a 2 night stay \$2400
-

TERMS & CONDITIONS

DEPOSIT

A non-refundable deposit of \$2,800 must be received to confirm the booking. Payment of this deposit will indicate acceptance of these booking conditions.

FINAL PAYMENT

Full payment must be received at least **60 days prior to checkin.**

For bookings made inside **4 weeks** to check-in, full payment is required at the time of booking, via credit card.

If deposit of final payment is not received by the due date, Sylvan Glen reserves the right to cancel the booking.

Confirmation and invoices are subject to re-issue if incorrect through error or omission, and the guest accepts the liability to then pay the correct cost or device to retain the reservation with full refund.

PAYMENT OPTIONS

Standard payments accepted include credit cards (Visa or Mastercard). electronic funds transfer.

Please note, credit card payments will show on your statement as Reality Unlimited.

Cheques may be made out to '**Sylvan Glen**' and should be posted to:
Sylvan Glen, Kareela Road, Penrose NSW 2579.

Bank details are as follows:

BSB 082494

ACC: 862353889

Account name: Sylvan Glen Estate

CANCELLATION TERMS AND CHARGES

- **Cancellation 90 days prior to booking 100% loss of deposit.**
- **Cancellation 60 days prior to booking arrival date -100% cancellation fee applies.**

Bookings held over in credit will be completely at the discretion of the property managers.

Administration fees may apply.

No-shows or cancellations after check-in will be subject to a 100% cancellation fee. However if after arrival, guests are dissatisfied with any aspect of their accommodation and decide to terminate their stay, the amount to be refunded (if any) is at the discretion of the property managers.

RATES AND CHARGES

Rates quoted on our website and information documents are in Australian dollars and are subject to change at any time. Accommodation rates are inclusive of GST.

Any verbal quote given is an estimate only of price, which will be subject to written advice on confirmation of the reservation.

The price of your stay cannot be guaranteed until full payment is received.

All prices and other payment and conditions should be confirmed at the time of booking.

CHECK-IN AND CHECK-OUT

- **Checkin 2pm friday and checkout is 11.30am Sunday**
- **Early checkins and late checkouts available prearranged only \$550 additional or stay an extra night for \$1400.**
- **Availability depends on bookings before or after your stay.**



